

WALTA

華大電子股份有限公司

Walta Electronic Co. Ltd

WALTA Electronic Introduction

華大電子公司簡介

About us

Company Profile



Establishment	1992
Capital	USD 3,000,000
Employee	250-300 staff
Headquarter	Taipei, Taiwan
Business Category	Design, Manufacturing, Sales, OEM / ODM

“WALTA
Stands for *“We Activate Life To Anyone.”*
We believe in the power of connectivity to activate life. We specialize in delivering connector and cable solutions to power up devices, enable seamless communication, drive efficiency across industries.
”



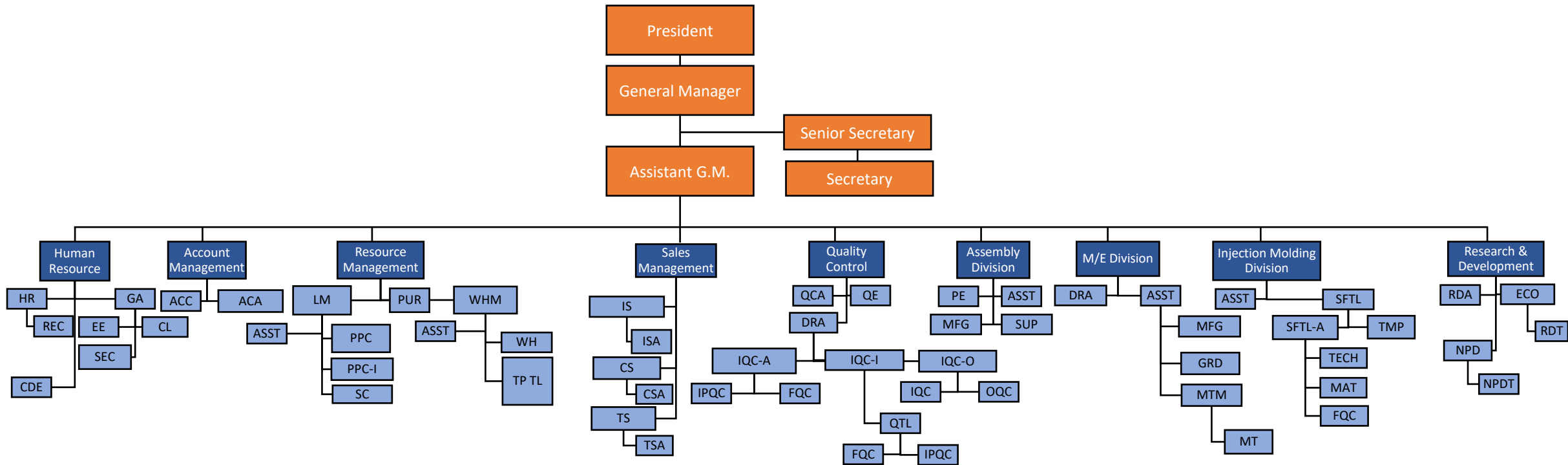
Walta Electronic Headquarters – Taipei, Taiwan
Our corporate office, R&D team, and customer support center are located in the heart of Taiwan’s tech hub



Manufacturing & Quality Control Facilities
From our Taiwan headquarters to our regional production network, we ensure high-quality connectivity solutions and adaptable supply strategies for our partners worldwide.

About us

Organization Chart



* Please refer to the "Abbreviation Key" page for full department and position names

About us

Organization Chart- Abbreviation Keys

Department	Position	Abbreviation
Human Resources	Human Resources	HR
	General Affairs	GA
	Reception	REC
	Customs Declaration & Export	CDE
	Electrical Engineer	EE
	Cleaning	CL
	Security	SEC
Account Management	Accounting	ACC
	Accounting Assistant	ACA
Resource Management	Logistics Management	LM
	Assistant	ASST
	Production Planning & Control - Assembly	PPC-A
	Production Planning & Control - Injection Molding	PPC-I
Procurement & Warehouse	Purchasing	PUR
	Warehouse Manager	WHM
	Assistant	ASST
	Warehouse Staff	WH
	Terminal Pin Cutting Team Leader	TP TL
Sales Management	Overseas Sales	IS
	Overseas Sales Assistant	ISA
	China Sales	CS
	China Sales Assistant	CSA
	Taiwan Sales	TS
	Taiwan Sales Assistant	TSA

About us

Organization Chart- Abbreviation Keys

Department	Position	Abbreviation
Quality Control	QC Assistant	QCA
	Drafter	DRA
	Incoming Quality Control - Assembly	IQC-A
	Incoming Quality Control - Injection Molding	IQC-I
	Incoming & Outgoing Quality Control	IQC-O
	QC Team Leader	QTL
Assembly Division	Process Engineer	PE
	Assistant	ASST
	Manufacturing Team	MFG
	Support Team	SUP
Mechanical & Electrical Division	Drafter	DRA
	Assistant	ASST
	Manufacturing Team	MFG
	Grinding Team	GRD
	Maintenance Manager	MTM
	Maintenance Team	MT
Injection Molding Division	Assistant	ASST
	Shift Leader - General	SFTL
	Shift Leader - A Shift	SFTL-A
	Technician	TECH
	Material Handler	MAT
	Final Quality Control Inspector	FQC
	Trial Molding & Material Preparation	TMP
Research and Development	R&D Assistant	RDA
	Engineering Change Order Team	ECO
	R&D Team Member	RDT
	New Product Development Team	NPD
	New Product Development Team Member	NPDT

About us

Core Competence

Quality

- R&D: Well-trained and experienced R&D team
- Production Line:
 - Strictly quality control
 - Regular in-house employee training
 - IQC/IPQC/FQC/OQC process
- ISO 9001, ISO 14001, RoHS compliant, SGS complaint, HDMI Association, USB Association

Service

- Well-trained sales team to help customer make customized product
- Flexible production line
- Providing innovative interconnection solutions for a variety of industries

Timely Delivery

Regional

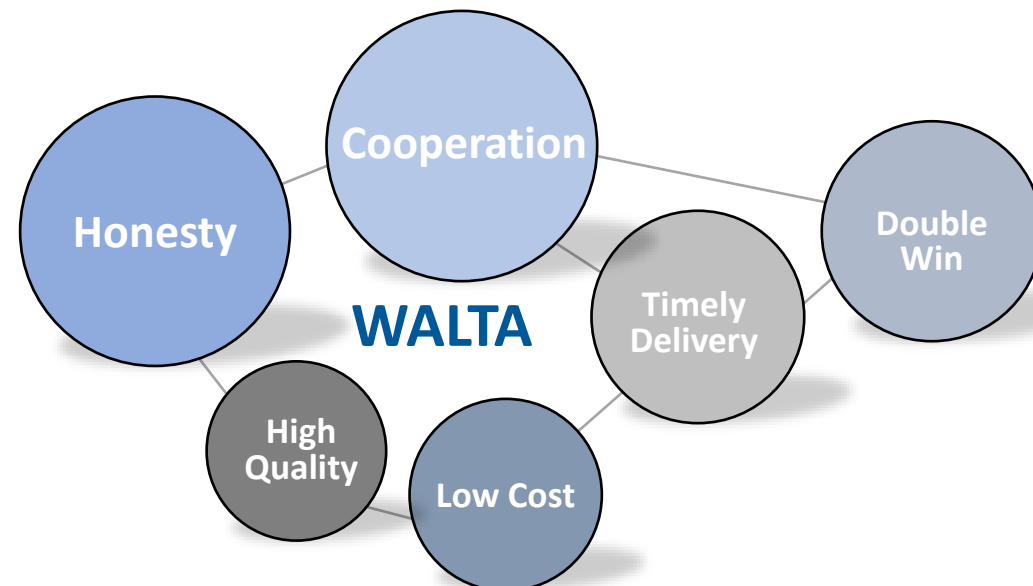
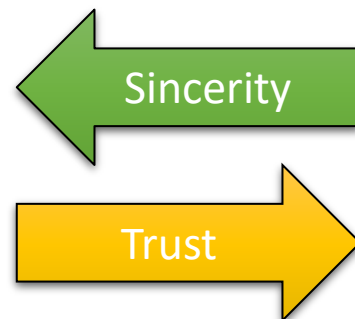
- Buffer stock for urgent inquiry
- ERP system as an essential tool

International

- Well-established and managed supply chain to provide world wide customers on time delivery and well-controlled quality product.
- Mature logistic process



Clients

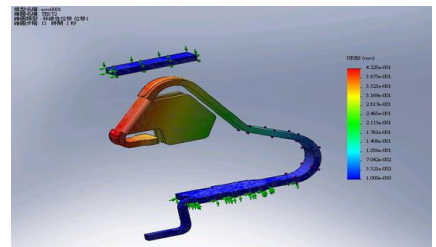
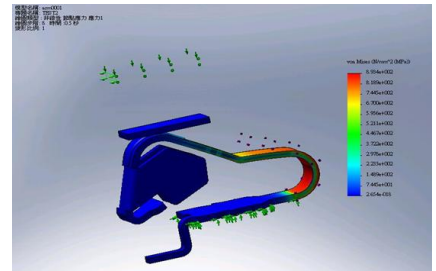
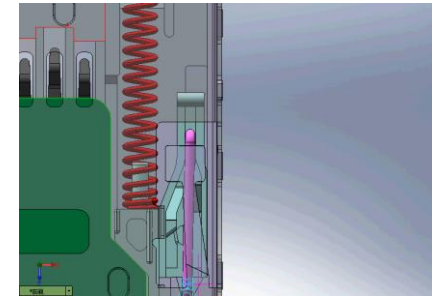
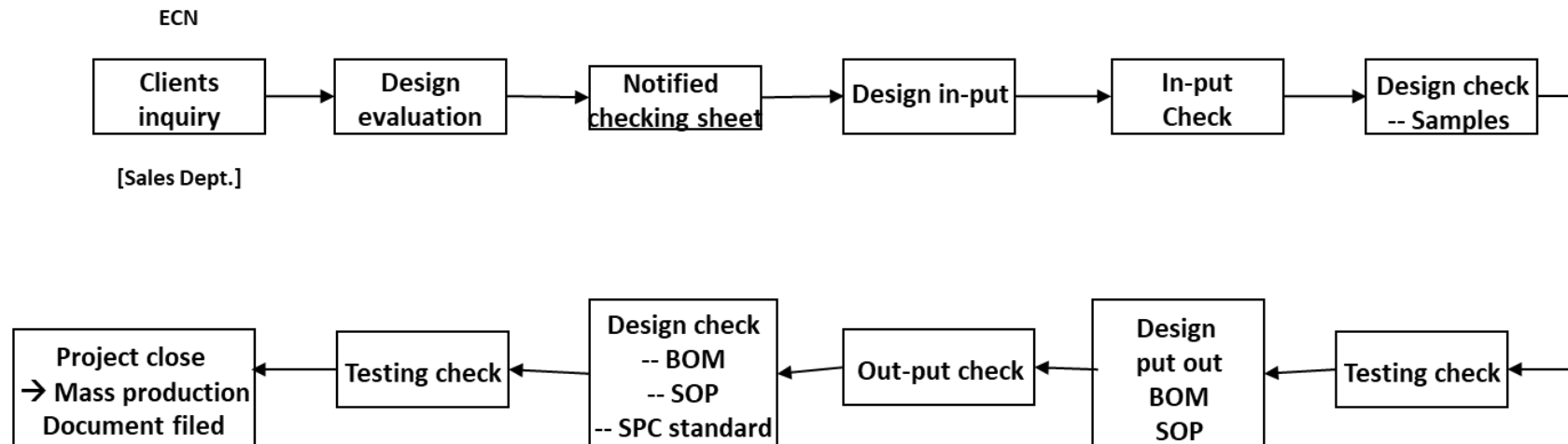


About us

R&D Capability



- Use the newest software: Auto CAD, Pro-E, SolidWorks COSMOS. Our existing engineers are with more than 25 years design experience in connector field.
- We have the ability to apply for patents of our own designs.
- We have full training courses for engineers to enhance capability and enrich know-how.
- Our R&D department continue to create innovated products for customers, and obtain patents.
- Obtain the member of HDMI Association and USB Association since 2008.



Functional testing 3D

About us

Quality Assurance



In order to serve world wide customers, Walta integrated ISO quality system since 1995, obtained ISO-9001 certificate since 1999, and received certificate ISO-14001 since 2006. Obtain the member of HDMI Association and USB Association since 2008.

Zero defection is our ultimate goal in quality. This goal is to achieved through the following steps :

- IQC/IPQC/FQC/OQC by ISO guidelines
- Using the most update manufacturing facilities and machineries
- Training & Education
- Hiring high quality workers





◀ Horizontal plastic injection machine with automatic arm
臥式注塑機



◀ Horizontal plastic injection machine with automatic arm
臥式注塑機



▲ SMT reflow machine
SMT回流焊接機

About us

Production Equipment and Laboratory



◀ Assembly Line
生產課



◀ Vertical Molding
立式塑膠機



▲ Half-automatic inspection and packing
半自動生產線

About us

Production Equipment and Laboratory



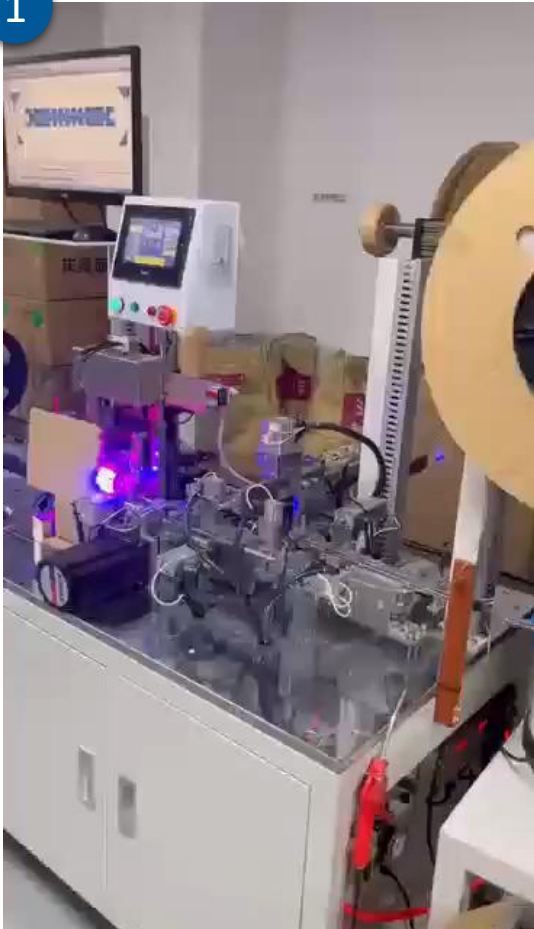
▲ Automatic inspection and packing ▲
自動生產線

About us

Production Equipment and Laboratory



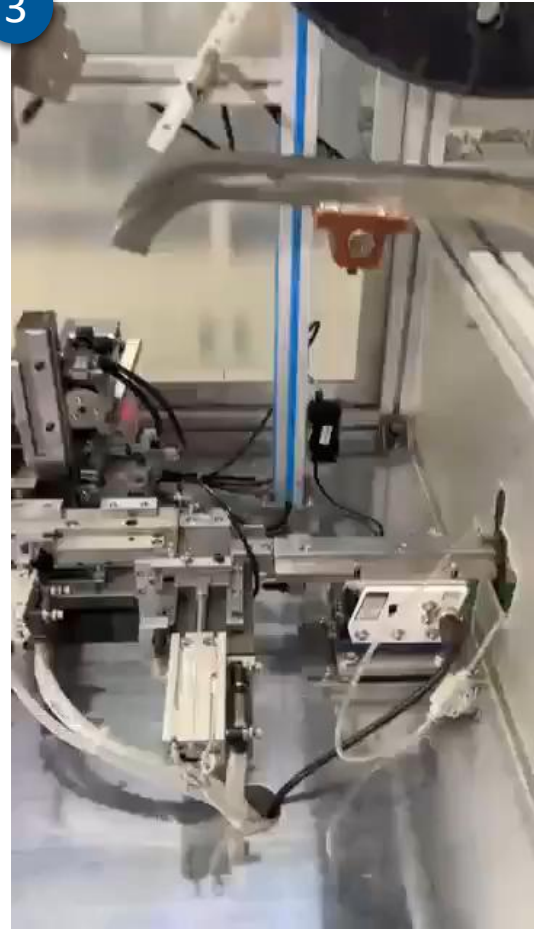
1



2



3



Production inspection and packaging automatic machine process video
生產檢驗包裝自動機流程影片

About us

Production Equipment and Laboratory



▲ Vertical molding machine
立式塑膠射出機



▲ HB soldering machine
自動焊接機



▲ Laser soldering machine
自動焊接機



▲ Strength testing machine
強度測試機

About us

Production Equipment and Laboratory



▲ Cable automatic pre-handling machine
自動撥線機



▲ CCD Projector
看3D投影機

About us

Production Equipment and Laboratory



▲ Vertical Projector
直立式投影機



▲ Life-span testing
machine 壽命測試機



▲ Life-span testing machine
壽命測試機

About us

Production Equipment and Laboratory



◀ Electroplate the antiseptic salt fog test machine
電鍍防腐鹽霧試驗機



◀ Conductive testing machine 導通測試



◀ Microscope and strength drawing device
顯微鏡及強力繪圖裝置



◀ Plastic performance and the product test high temperature machine
塑膠性能及產品測試高溫機

About us

Production Equipment and Laboratory



▲ Horizontal projection tester
水平儀



▲ High-pressure test machine
高壓測試機



▲ Electroplate the thick tester of
membrane 電鍍膜厚測試儀



▲ RoHS testing machine
無鹵測試機



◀ Comprehensive test machine of
line material 完整線材測試機

Walta Product Portfolio

產品總攬 Overview

Walta Electronic is a professional manufacturer of connector and cable products, headquartered in Taipei. Walta Electronic boasts over 30 years of expertise in creating connectivity solutions, we are committed to deliver high quality products with the support of our professionally equipped engineers, customer-centric service and well-prepared timely delivery.

Our portfolio encompasses a broad spectrum of I/O connectors and cables, spanning from USB, HDMI, Display Port to SD memory card connectors and cables. We have in-house design and manufacturing capability to offer qualitative customizable solutions for our clients globally, this service covers various industries including industrial, telecommunications, automotives and consumer electronics.

We are compliant with ISO9001, ISO14001, HDMI Certificate and USB Certificate standards and always welcome ODM, OEM projects and customize connector and cable requests.

Our Expertise →



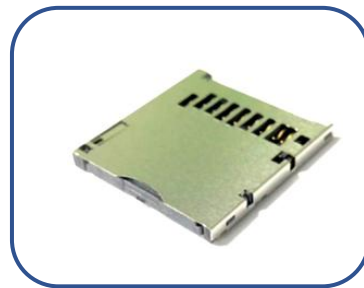
HDMI Connector



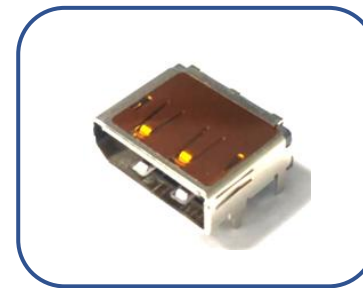
**USB 2.0/3.0
Connector**



**USB C
Connector**



**Memory Card
Connector**



Display Port



Cables

*Please note the following product catalogue provided are the common products, serving as direction of manufacturing possibilities.
For more details and customization please contact us for more information.

Walta Product Portfolio

產品總攬 Overview

🏠 Others we offer →



I/O Connectors

- Combo Connectors
- DVI Connectors
- D-Sub Connectors
- RGB Connectors



Board to Board Connectors

- DDR 2/3
- DDR 4
- M.2
- PCIe
- SATA



Network & Power Connectors

- RJ45
- DC Power Jack



Waterproof Connectors

- USB 2.0
- USB 3.0
- USB Type C
- Micro USB



Battery Connectors

- Spring-Loaded
- Toggle Switch



Connector Components

- Shielding Shell
- Hardware
- Housing
- Terminals

*Please note the following product catalogue provided are the common products, serving as direction of manufacturing possibilities.
For more details and customization please contact us for more information.

Walta Product Portfolio

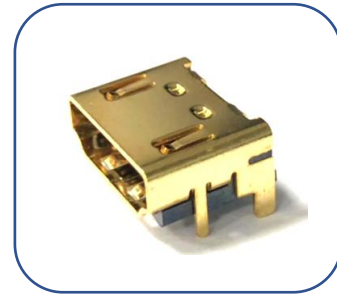
HDMI Female



HDMI Female

PN: D13-0715-19371

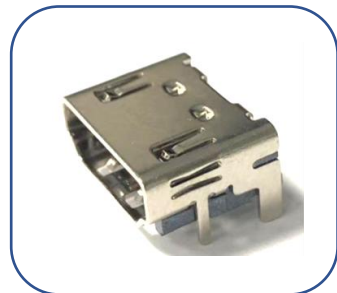
Specification : DIP+SMT



HDMI Female

PN: D13-0715-19391

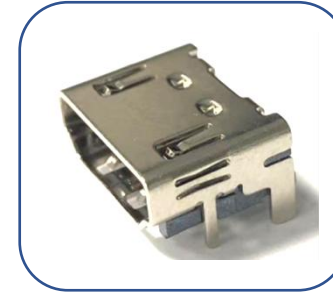
Specification : DIP+SMT



HDMI Female

PN: D13-0715-19511

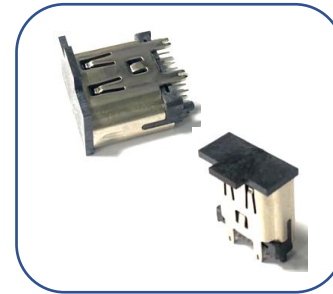
Specification : DIP+SMT



HDMI Female (HDMI 2.1 version)

PN: D13-0715-19681

Specification : HDMI 2.1 version. DIP+SMT

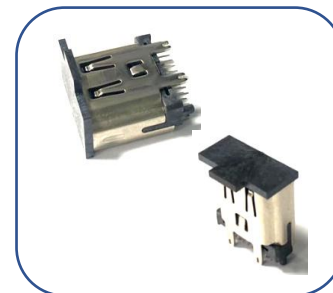


HDMI Female

PN: D13-0823-19001 H=13mm

PN: D13-0823-19005 H=17.24mm

Specification : Vertical. DIP



HDMI Female

PN: D13-0823-19006

Specification : Vertical. H=13.5mm
DIP

Walta Product Portfolio

HDMI Female



HDMI Female

PN: D13-0829-19032

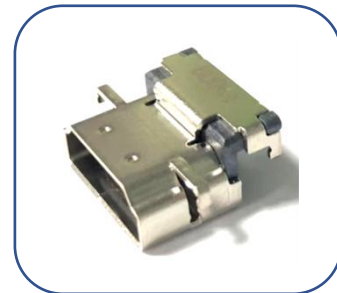
Specification : CH=-0.30mm DIP



HDMI Female

PN: D13-0864-19012

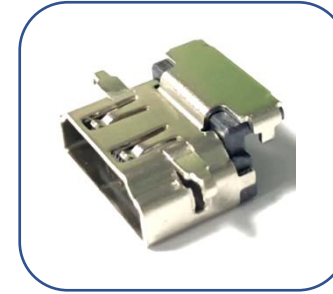
Specification : CH=-1.28mm DIP



HDMI Female

PN: D13-0864-19022

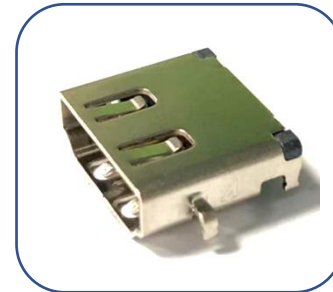
Specification : CH=2.36mm DIP



HDMI Female

PN: D13-0864-19032

Specification : CH=2.25mm DIP



HDMI Female

PN: D13-0865-19012

Specification : Reverse. CH=0.00mm DIP

Walta Product Portfolio

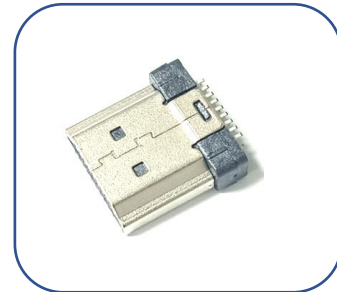
HDMI Male



HDMI Male 2.1

PN: M30-0613-00015

Specification: -



HDMI Male 1.4

PN: M30-0716-00020

Specification : -

Walta Product Portfolio

USB Connector- 2.0



USB Female 4PIN

PN: D02-0825-04001 (Au : 1u'')

PN: D02-0825-04002 (Au : 15u'')

Specification: DIP

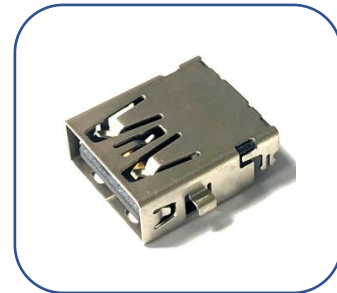


USB Female 4PIN

PN: D02-0847-04001(CH=-2.95mm)

PN: D02-0847-04002 (CH=-2.10mm)

Specification: DIP



USB Female 4PIN

PN: D02-0828-04001 (Au:G/F)

PN: D02-0828-04003 (Au:30U'')

Specification: CH=0.20mm DIP



USB Female 4PIN

PN: D02-0857-04001 (CH=0.69mm)

PN: D02-0857-04002 (CH=0.89mm)

PN: D02-0857-04003 (CH=0.50mm)

Specification: DIP



USB Female 4PIN

PN: D02-0828-04002

Specification: CH=0.20mm DIP



USB Female 4PIN

PN: D02-0857-04004

Specification: CH=0.89mm DIP

Walta Product Portfolio

USB Connector- 2.0



USB Female 4PIN

PN: D02-0863-04001 (CH=-0.44mm)

PN: D02-0863-04002 (CH=-0.80mm)

Specification: DIP



USB Female 4PIN

PN: D02-0869-04001

Specification: CH=1.40mm



USB Female 4PIN

PN: D02-0783-04006

Specification: CH=3.0mm DIP



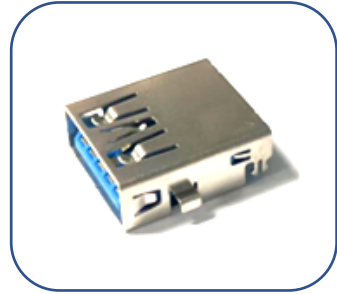
USB Female 4PIN

PN: D02-C097-04001

Specification: -

Walta Product Portfolio

USB Connector- 3.0



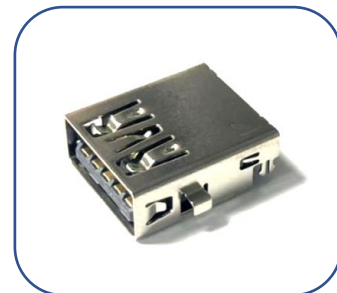
USB Female 9PIN

PN: D02-0807-09001 (blue)
PN: D02-0807-09002 (black)
Specification: Reverse. CH=0.40mm DIP



USB Female 9PIN

PN: D02-0807-09004
Specification: Reverse. CH=0.00mm DIP



USB Female 9PIN

PN: D02-0807-09005 (black)
PN: D02-0807-09006 (blue)
Specification: Reverse. CH=0.40mm DIP



USB Female 9PIN

PN: D02-0850-09001
Specification: CH=0.40mm DIP



USB Female 9PIN

PN: D02-0850-09002
Specification: CH=1.69mm DIP

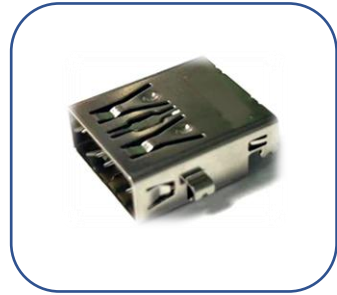


USB Female 9PIN

PN: D02-0850-09003
Specification: CH=1.90mm DIP

Walta Product Portfolio

USB Connector- 3.0



USB Female 9PIN

PN: D02-0850-09004

Specification: CH=0.10mm DIP



USB Female 9PIN

PN: D02-0860-09001

Specification: Reverse. CH=-0.36mm DIP



USB Female 9PIN

PN: D02-0861-09001

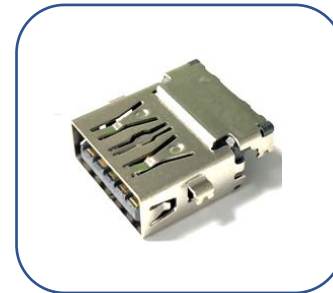
Specification: CH=-0.45mm DIP



USB Female 9PIN

PN: D02-0862-09001

Specification: Reverse. CH=-0.44mm DIP



USB Female 9PIN

PN: D02-0870-09001

Specification: Reverse. CH=-1.20mm DIP

Walta Product Portfolio

USB Connector- Type C



Type C Female 16PIN

PN: D13-0824-16007

Specification: DIP+SMT



Type C Female 16PIN

PN: D12-0872-16001

Specification: CH=0.30mm DIP+SMT

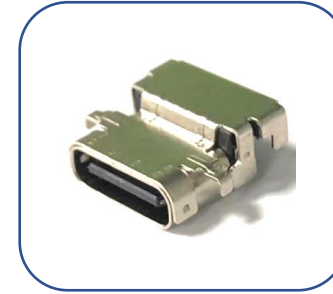


Type C Female 24PIN

PN: D13-0867-24001 (H=12mm)

PN: D13-0867-24002 (H=7.7mm)

Specification: DIP+SMT



Type C Female 24PIN

PN: D13-0868-24001

Specification: CH=-1.40mm DIP+SMT



Type C Female 24PIN

PN: D13-0871-24001

Specification: CH=1.1mm DIP+SMT



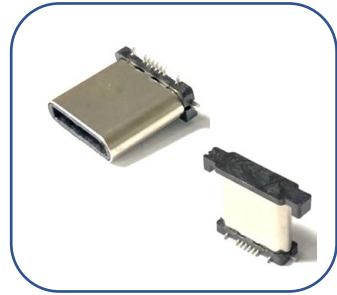
Type C Female 24PIN

PN: D13-0824-24018

Specification: DIP+SMT

Walta Product Portfolio

USB Connector- Type C



Type C Male 16PIN

PN: A13-0836-16001

Specification: SMT



Type C Male 22PIN

PN: U03-C085-02201

Specification: SMT

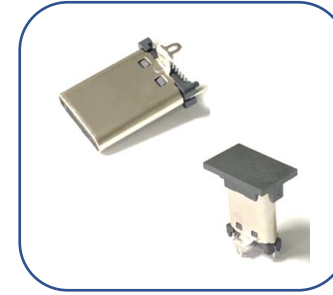


Type C Male 22PIN

PN: A13-0848-22001 (Au : G/F)

PN: A13-0848-22002 (Au : 30u'')

Specification: SMT +DIP



Type C Male 24PIN

PN: U03-C071-02401

Specification: SMT +DIP



Type C Male

PN: M30-0866-00001(24PIN)

PN: M30-0866-00002(12PIN)

Specification: -

Walta Product Portfolio

USB Connector- Type C: plug with PCB



Type C Male 12PIN

PN: M30-0866-01001

Specification : C TO C



Type C Male 12PIN

PN: M30-0866-01002

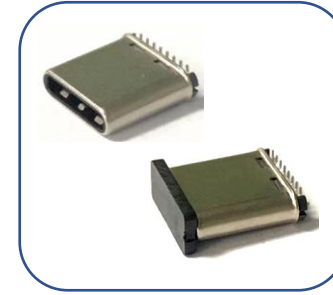
Specification: A TO C, Rp 56k Ohms



Type C Male 12PIN

PN: M30-0866-01003

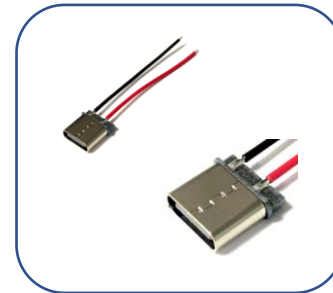
Specification: Micro B TO C, Rd 5.1K Ohms



Type C Male 16PIN

PN: A13-0873-16001

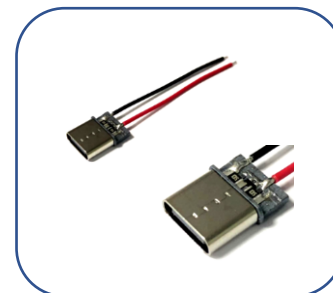
Specification: SMT



Type C male plus cable

PN: M30-C097-00001

Specification: -



Type C male plus cable

PN: M30-C097-00002

Specification: -

Walta Product Portfolio

USB Connector- Type C: plug with PCB



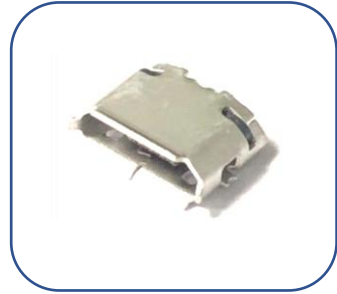
Type C Male 24PIN

PN: M30-0838-01005

Specification: C TO C C1=10nF

Walta Product Portfolio

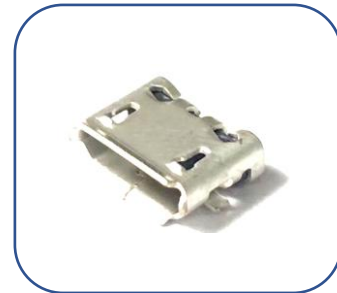
Micro USB



Micro Female 5PIN

PN: D03-0718-05001

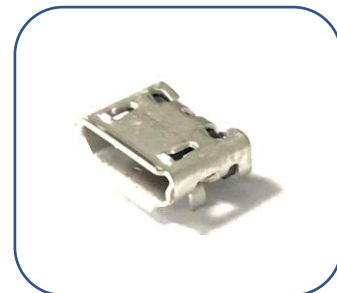
Specification: SMT



Micro Female 5PIN

PN: D03-0718-05002

Specification: SMT



Micro Female 5PIN

PN: D03-0718-05003 (Association Version)

Specification: SMT+DIP



Micro Female 5PIN

PN: D03-0718-05035

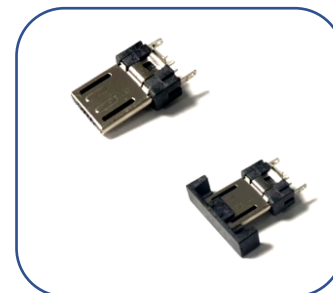
Specification: SMT+DIP



Micro Female 5PIN

PN: D03-0796-05005

Specification: SMT+DIP



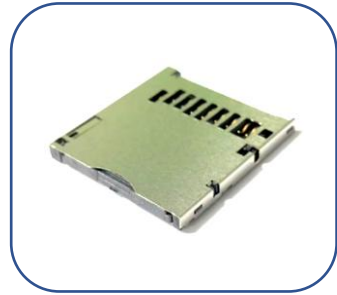
Micro Male 5PIN

PN: M30-0717-00045

Specification: DIP

Walta Product Portfolio

SD/TF Card



SD push-push

PN: F03-0655-00008

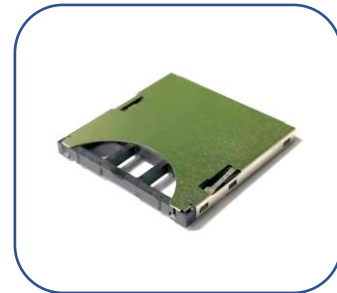
Specification: Reverse. H=2.85mm



SD Non push

PN: S01-0115-00001

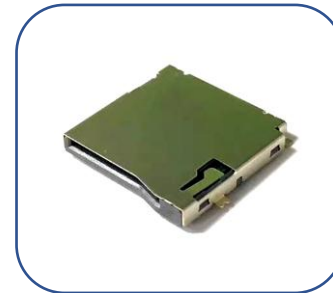
Specification: H=2.80mm



SD push-push

PN: F03-0647-00001

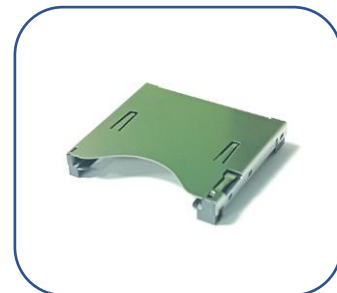
Specification: -



Micro SD push-push

PN: S01-C024-00002

Specification: -



SD push-push

PN: F03-0116-00001

Specification: H=4.55mm



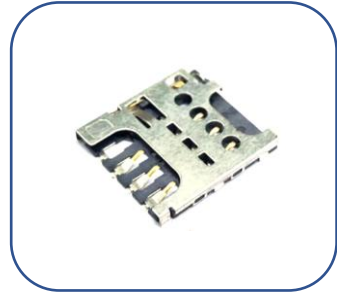
Micro SD Non push

PN: F03-0105-00001

Specification: -

Walta Product Portfolio

Sim Card



Micro Sim

PN: E03-0810-06001 (6PIN)

PN: E03-0810-08001 (8PIN)

Specification: H=1.40mm



Nano SIM

PN: E03-0855-06001

Specification: Hinge



Nano Sim Push-Pull

PN: F03-0121-00001

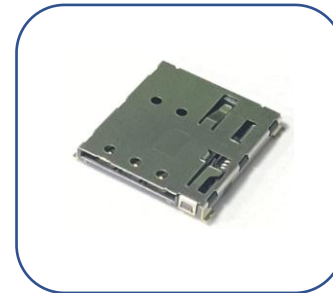
Specification: H=1.3mm



Micro sim push-push

PN: S05-C088-06001

Specification: H=1.35mm



Nano sim push- push

PN: S05-C088-06002

Specification: H=1.44mm



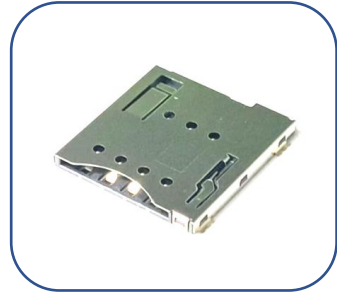
Sim Hinge Type

PN: F03-0115-00001

Specification: H=1.8mm

Walta Product Portfolio

Sim Card



Micro sim push-push

PN: F03-0119-00001

Specification: H=1.5mm



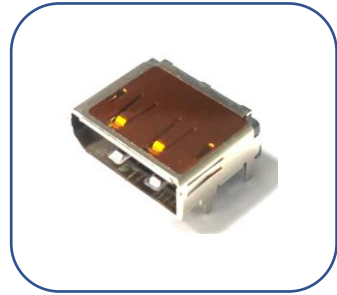
Nano sim push-push

PN: F03-0123-00001

Specification: H=1.24mm

Walta Product Portfolio

Display Port



DP

PN: D01-C097-02001

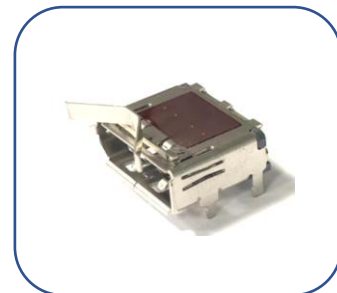
Specification: DIP + SMT



DP Vertical

PN: D02-C124-02001

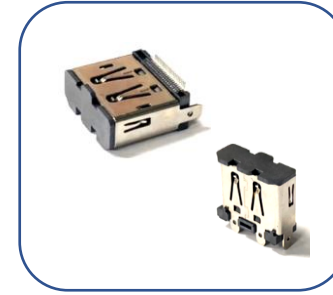
Specification: DIP + SMT Vertical



DP + Fringe

PN: D06-C124-0200X

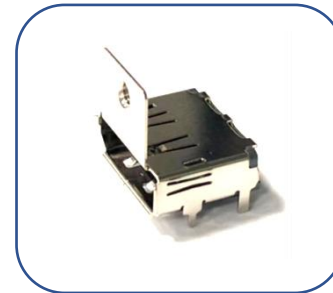
Specification: DIP + SMT



DP Vertical

PN: D04-C124-02001

Specification: DIP + SMT



DP + Lock

PN: D05-C124-02001

Specification: DIP + SMT

Walta Product Portfolio

Cables



USB CM to CM

PN: U07-W101-00001

Specification: L:1000mm.
USB 3.2(32#1P+D+AL/MY)*4P+32#1P+32
4C+22#2C+AB(144B/TC). OD:4.5mm
PVC Black jacket



USB 2.0 AM to CM

PN: U03-W101-02401

Specification: L:1000mm.
30AWG*1P+26AWG*2C+AS, PVC black Jacket,
OD 3.2+/-0.05mm



DP/M to DP/M

PN: D01-W129-00001

Specification: L: 1000mm. OD: 5.5mm
Voltage: 300V DC/0.1s
Jacket: PVC
Function: 4K 60Hz



USB 2.0 AM to CM

PN: U06-W101-00001

Specification: L:1500mm.
28AWG*1P+22AWG*2C+AL+D+B,
OD 4.5mm, PVC black jacket



DP 2.1/M to DP 2.1/M

PN: W01-C126-00001

Specification: 1/0.254BC*1P+AL-
foil+Adhesive-PET)*
5P+1/0.254BC*2C+ADB PVC black
jacket OD: 6.3mm



Wire Charger

PN: U09-W101-00001

Specification: L: 82mm, Voltage: 300V DC/0.1s
WIRE 28AWG Red, Black, Orange, Yellow, Blue, Green
HSG, SH1.0-6P both side with lock
TER, SH1.0 Terminal Sn plating
TUBE, Gray conductive fabric, Anti-EMI

Walta Product Portfolio

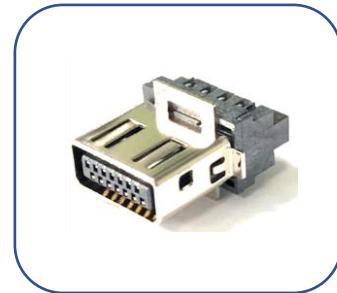
Others we offer



RGB Female 14PIN

PN: D12-0558-14001

Specification: DIP



RGB Male 14PIN

PN: M30-0558-00051

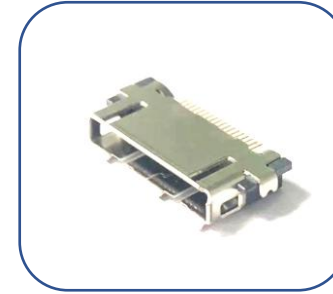
Specification: Solder Type



Male 18PIN

PN: A13-0619-18004

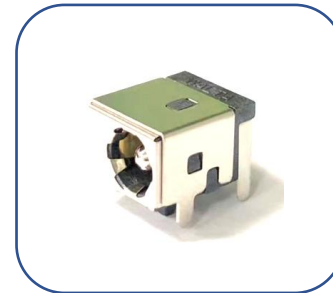
Specification: SMT+DIP



Female 18PIN

PN: D13-0826-18001

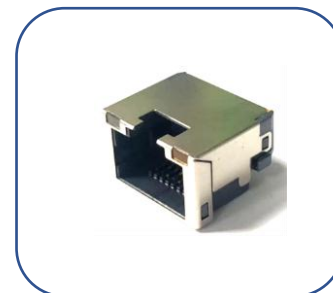
Specification: SMT+DIP



DC Jack

PN: D02-0732-03001

Specification: DIP



RJ45

PN: G02-0808-08001

Specification: H=5.90MM

Walta Product Portfolio

Others we offer



SHELL

PN: M22-0853-20001

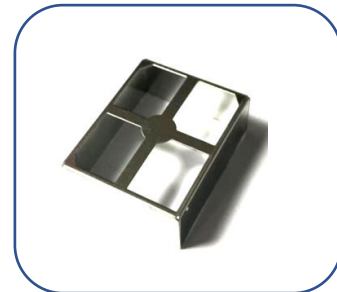
Specification: H=6.80mm



SHELL

PN: M22-0853-20003

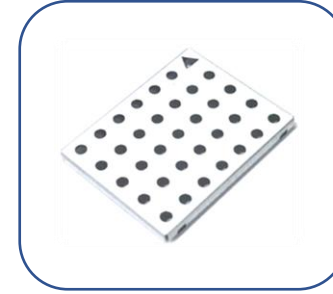
Specification: H=8.20mm



SHELL

PN: M22-0853-20004

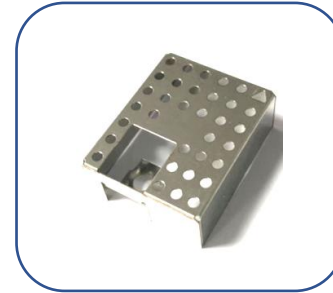
Specification: H=9.20mm



SHELL

PN: M22-0853-20005

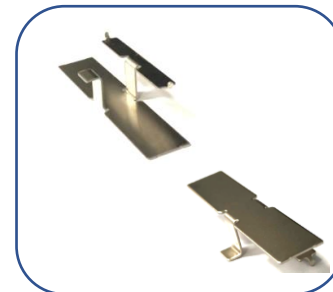
Specification: H=2.00mm



SHELL

PN: M22-0853-20006

Specification: H=9.20mm



SHELL

PN: M22-C097-50001

Specification: -

Walta Product Portfolio

Others we offer



SATA Female 22PIN

PN: A42-0841-22001

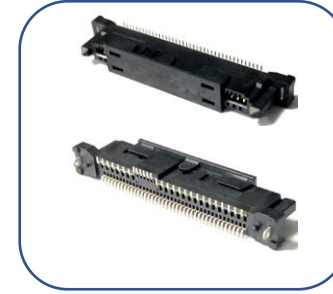
Specification: (DIP) CH=0.60mm



SATA Female 22PIN

PN: A43-0841-22001

Specification: (SMT+DIP) CH=0.60mm



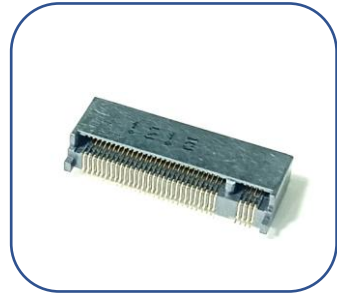
SATA Female 22PIN

PN: A42-C097-48001

Specification: (SMT+DIP)

Walta Product Portfolio

Others we offer



M2

PN: M30-C088-00001

Specification: H=4mm



Mini PCI

PN: M30-C088-00002

Specification: H=4mm



DDR4 R/A

PN: M30-C088-00003

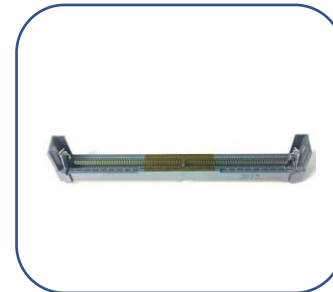
Specification: H=5.2mm



DDR4

PN: M30-C088-00005

Specification: Erect position



DDR45

PN: M30-C088-00007

Specification: Erect position



DDR5 R/A

PN: M30-C088-00008

Specification: H=5.2mm

Walta Product Portfolio

Others we offer



DDR4

PN: M30-C088-00004

Specification: R/A H=9.2mm



DDR4

PN: M30-C088-00006

Specification: Vertical 260 Pin

Walta Electronic

We Activate Life To Anyone

➔ **Be Young**

We will be mentally young in terms of doing our jobs, serving our customers and contributing to the community.

➔ **Be Competitive**

In this dynamic industry, we must be competitive in order to be successful. We will be competitive. We will serve customers with competitive products. We will continuously invest in design, manufacturing, engineering, ISO quality system and education to sustain the company's being competitive.

➔ **Be Profitable**

We will be a profitable corporation so that we can bring value to our customers and suppliers, provide our employees with dignified living necessities, provide our shareholders with favorable returns and support the company's steady growth and expansion.



CONNECTOR

We Activate Life To Anyone

 For more information please visit: <http://www.walta.com.tw>

WALTA