

**WALTA**

華大電子股份有限公司

Walta Electronic Co. Ltd

# **WALTA Electronic Introduction**

華大電子公司簡介

# About us

## Company Profile



<b>Establishment</b>	1992
<b>Capital</b>	USD 3,000,000
<b>Employee</b>	20-30 staff in Taiwan; 150-250 staff in China
<b>Headquarter</b>	Taipei, Taiwan
<b>Manufacturing Plants</b>	China – ShenZhen, GuangDong
<b>Business Category</b>	Design, Manufacturing, Sales, OEM / ODM

**“**

# WALTA

Stands for *“We Activate Life To Anyone.”*

We believe in the power of connectivity to activate life. We specialize in delivering connector and cable solutions to power up devices, enable seamless communication, drive efficiency across industries.

**”**



Factory | Shenzhen city, China



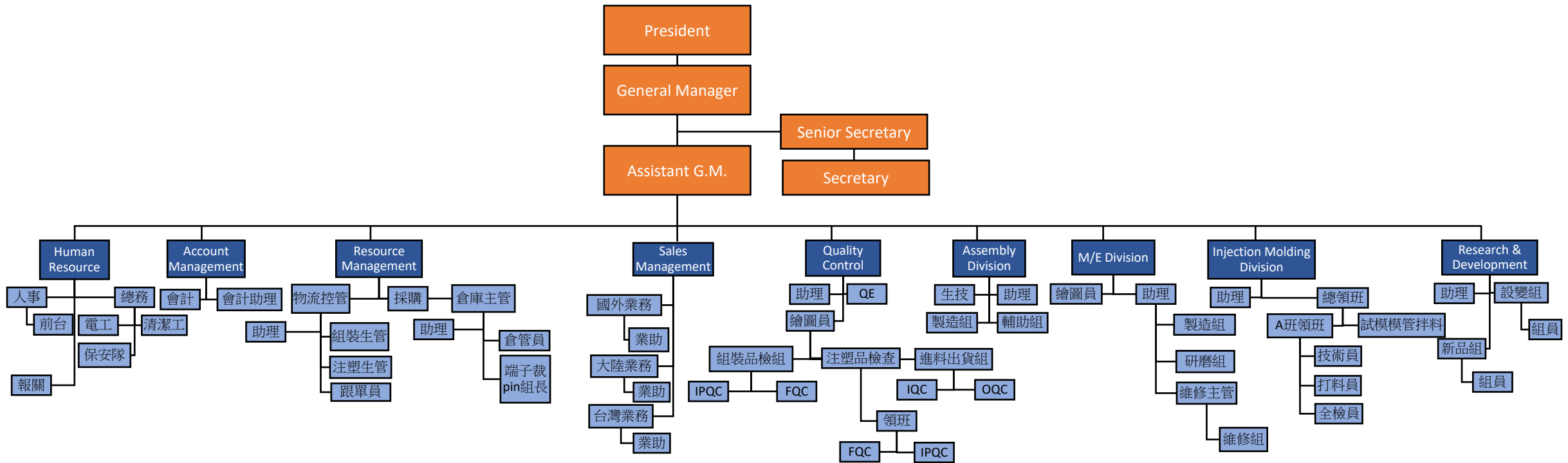
Production Line | Shenzhen city, China



Head Office | Taipei city, Taiwan

# About us

## Organization Chart



# About us

## Core Competence

### Quality

- R&D: Well-trained and experienced R&D team
- Production Line:
  - Strictly quality control
  - Regular in-house employee training
  - IQC/IPQC/FQC/OQC process
- ISO 9001, ISO 14001, RoHS compliant, SGS complaint, HDMI Association, USB Association

### Service

- Well-trained sales team to help customer make customized product
- Flexible production line
- Providing innovative interconnection solutions for a variety of industries

### Timely Delivery

#### Regional

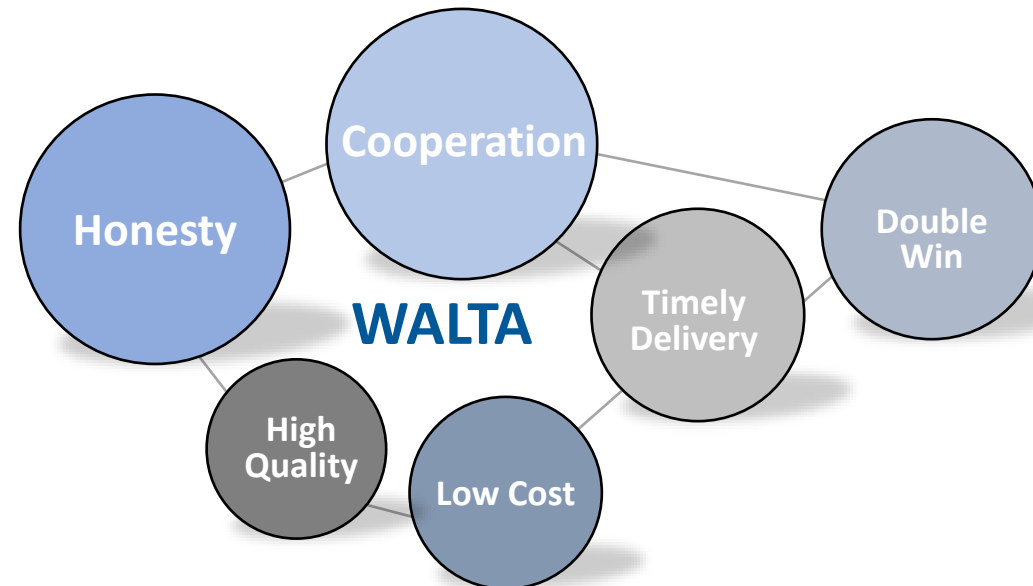
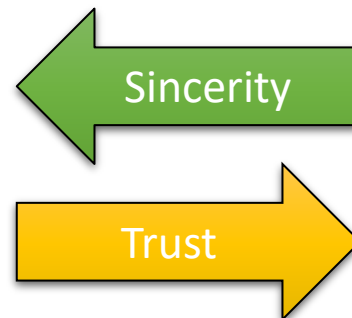
- Buffer stock for urgent inquiry
- ERP system as an essential tool

#### International

- Well-established and managed supply chain to provide world wide customers on time delivery and well-controlled quality product.
- Mature logistic process



Clients

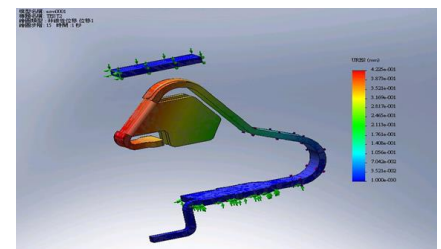
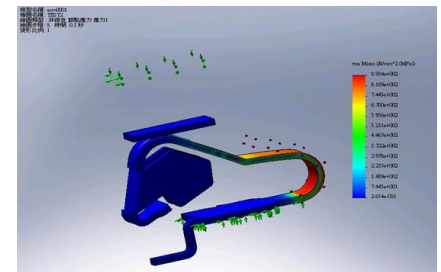
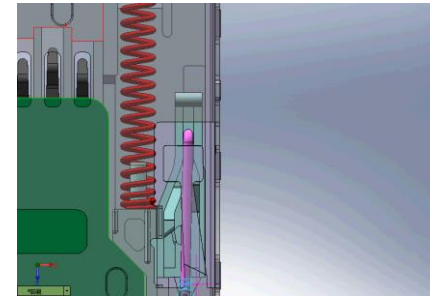
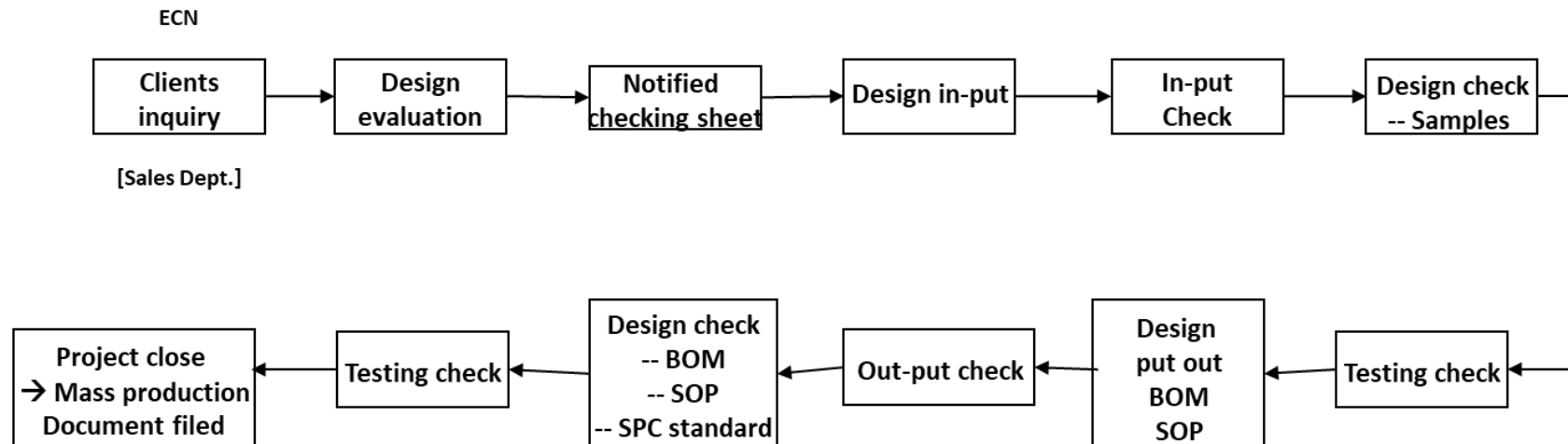


# About us

## R&D Capability



- Use the newest software: Auto CAD, Pro-E, SolidWorks COSMOS. Our existing engineers are with more than 25 years design experience in connector field.
- We have the ability to apply for patents of our own designs.
- We have full training courses for engineers to enhance capability and enrich know-how.
- Our R&D department continue to create innovated products for customers, and obtain patents.
- Obtain the member of HDMI Association and USB Association since 2008.



Functional testing 3D

# About us

## Quality Assurance



In order to serve world wide customers, Walta integrated ISO quality system since 1995, obtained ISO-9001 certificate since 1999, and received certificate ISO-14001 since 2006. Obtain the member of HDMI Association and USB Association since 2008.

Zero defection is our ultimate goal in quality. This goal is to achieved through the following steps :

- IQC/IPQC/FQC/OQC by ISO guidelines
- Using the most update manufacturing facilities and machineries
- Training & Education
- Hiring high quality workers





◀ Horizontal plastic injection machine with automatic arm  
臥式注塑機



◀ Horizontal plastic injection machine with automatic arm  
臥式注塑機



▲ SMT reflow machine  
SMT回流焊接機

About us

# Production Equipment and Laboratory



◀ Assembly Line  
生產課



◀ Vertical Molding  
立式塑膠機



▲ Half-automatic inspection and packing  
半自動生產線



About us

# Production Equipment and Laboratory



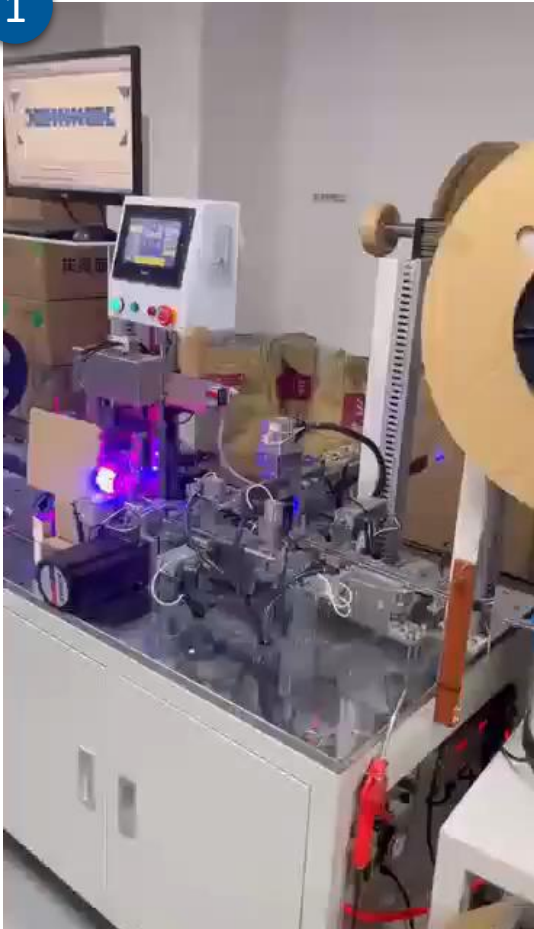
▲ Automatic inspection and packing ▲  
自動生產線

About us

# Production Equipment and Laboratory



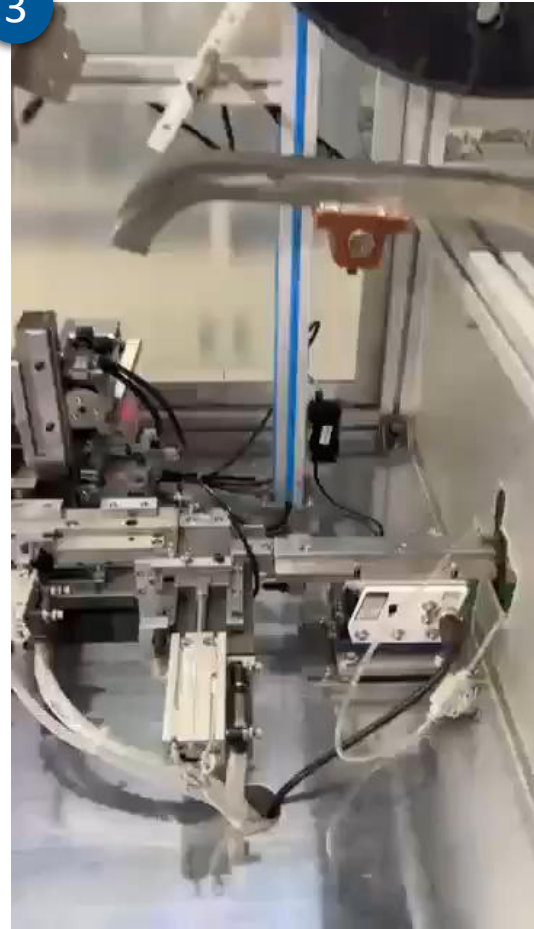
1



2



3



Production inspection and packaging automatic machine process video  
生產檢驗包裝自動機流程影片

About us

# Production Equipment and Laboratory



▲ Vertical molding machine  
立式塑膠射出機



▲ HB soldering machine  
自動焊接機



▲ Laser soldering machine  
自動焊接機



▲ Strength testing machine  
強度測試機

About us

## Production Equipment and Laboratory



▲ Cable automatic pre-handling machine  
自動撥線機



▲ CCD Projector  
看3D投影機

About us

# Production Equipment and Laboratory



▲ Vertical Projector  
直立式投影機



▲ Life-span testing  
machine 壽命測試機



▲ Life-span testing machine  
壽命測試機



◀ Electroplate the antiseptic salt fog test machine  
電鍍防腐鹽霧試驗機



◀ Conductive testing machine 導通測試



◀ Microscope and strength drawing device  
顯微鏡及強力繪圖裝置



◀ Plastic performance and the product test high temperature machine  
塑膠性能及產品測試高溫機

About us

# Production Equipment and Laboratory



▲ Horizontal projection tester  
水平儀



▲ High-pressure test machine  
高壓測試機



▲ Electroplate the thick tester of  
membrane 電鍍膜厚測試儀



▲ RoHS testing machine  
無鹵測試機



▲ Comprehensive test machine of  
line material 完整線財測試機

# Walta Product Portfolio

## 產品總攬 Overview

Walta Electronic is a professional manufacturer of connector and cable products, headquartered in Taipei. Walta Electronic boasts over 30 years of expertise in creating connectivity solutions, we are committed to deliver high quality products with the support of our professionally equipped engineers, customer-centric service and well-prepared timely delivery.

Our portfolio encompasses a broad spectrum of I/O connectors and cables, spanning from USB, HDMI, Display Port to SD memory card connectors and cables. We have in-house design and manufacturing capability to offer qualitative customizable solutions for our clients globally, this service covers various industries including industrial, telecommunications, automotives and consumer electronics.

We are compliant with ISO9001, ISO14001, HDMI Certificate and USB Certificate standards and always welcome ODM, OEM projects and customize connector and cable requests.

### Our Expertise →



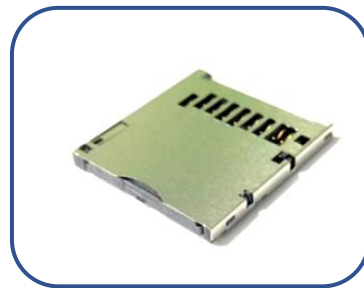
**HDMI Connector**



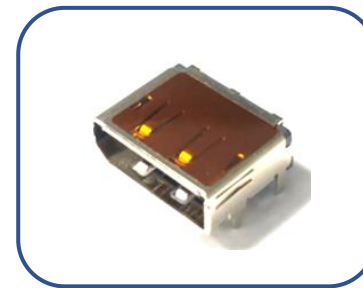
**USB 2.0/3.0  
Connector**



**USB C  
Connector**



**Memory Card  
Connector**



**Display Port**



**Cables**

\*Please note the following product catalogue provided are the common products, serving as direction of manufacturing possibilities.  
For more details and customization please contact us for more information.

**WALTA**



# Walta Product Portfolio

## 產品總攬 Overview

### 🏠 Others we offer →



### I/O Connectors

- Combo Connectors
- DVI Connectors
- D-Sub Connectors
- RGB Connectors



### Board to Board Connectors

- DDR 2/3
- DDR 4
- M.2
- PCIe
- SATA



### Network & Power Connectors

- RJ45
- DC Power Jack



### Waterproof Connectors

- USB 2.0
- USB 3.0
- USB Type C
- Micro USB



### Battery Connectors

- Spring-Loaded
- Toggle Switch



### Connector Components

- Shielding Shell
- Hardware
- Housing
- Terminals

\*Please note the following product catalogue provided are the common products, serving as direction of manufacturing possibilities.  
For more details and customization please contact us for more information.

# Walta Product Portfolio

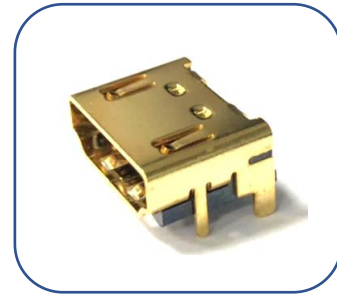
## HDMI Female



### HDMI Female

PN: D13-0715-19371

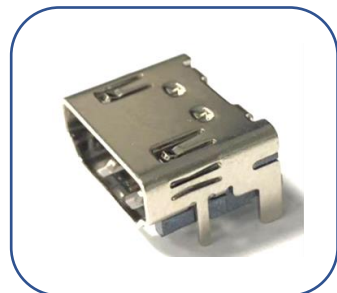
Specification : DIP+SMT



### HDMI Female

PN: D13-0715-19391

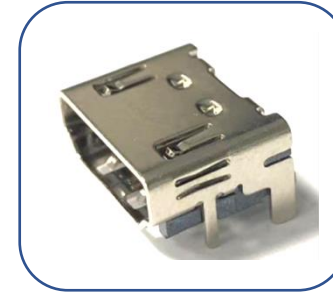
Specification : DIP+SMT



### HDMI Female

PN: D13-0715-19511

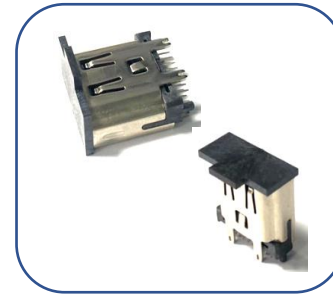
Specification : DIP+SMT



### HDMI Female (HDMI 2.1 version)

PN: D13-0715-19681

Specification : HDMI 2.1 version. DIP+SMT

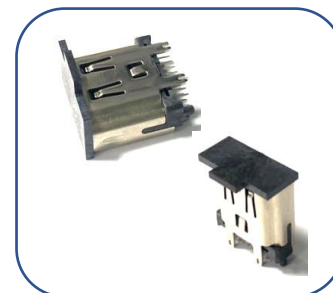


### HDMI Female

PN: D13-0823-19001 H=13mm

PN: D13-0823-19005 H=17.24mm

Specification : Vertical. DIP



### HDMI Female

PN: D13-0823-19006

Specification : Vertical. H=13.5mm  
DIP

# Walta Product Portfolio

## HDMI Female



### HDMI Female

PN: D13-0829-19032

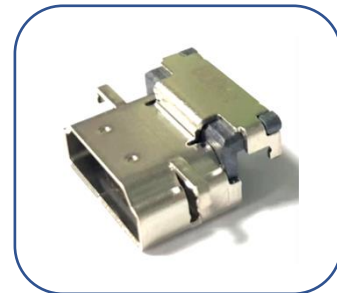
Specification : CH=-0.30mm DIP



### HDMI Female

PN: D13-0864-19012

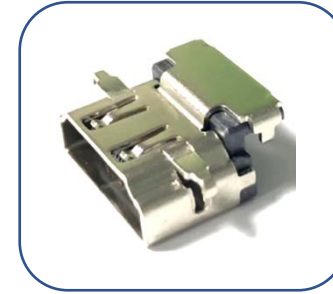
Specification : CH=-1.28mm DIP



### HDMI Female

PN: D13-0864-19022

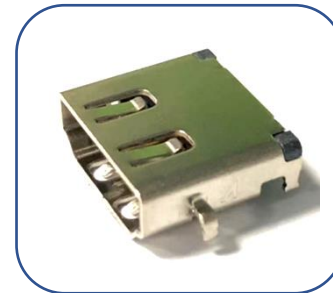
Specification : CH=2.36mm DIP



### HDMI Female

PN: D13-0864-19032

Specification : CH=2.25mm DIP



### HDMI Female

PN: D13-0865-19012

Specification : Reverse. CH=0.00mm DIP

# Walta Product Portfolio

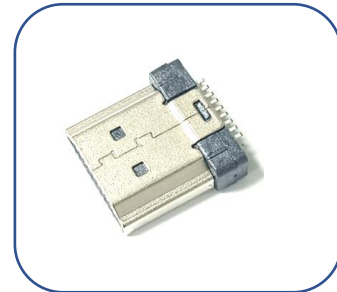
## HDMI Male



### **HDMI Male 2.1**

PN: M30-0613-00015

Specification: -



### **HDMI Male 1.4**

PN: M30-0716-00020

Specification : -

# Walta Product Portfolio

## USB Connector- 2.0



### USB Female 4PIN

PN: D02-0825-04001 ( Au : 1u'' )

PN: D02-0825-04002 ( Au : 15u'' )

Specification: DIP



### USB Female 4PIN

PN: D02-0847-04001(CH=-2.95mm)

PN: D02-0847-04002 (CH=-2.10mm )

Specification: DIP



### USB Female 4PIN

PN: D02-0828-04001 ( Au:G/F )

PN: D02-0828-04003 ( Au:30U'' )

Specification: CH=0.20mm DIP



### USB Female 4PIN

PN: D02-0857-04001 (CH=0.69mm)

PN: D02-0857-04002 (CH=0.89mm)

PN: D02-0857-04003 (CH=0.50mm)

Specification: DIP



### USB Female 4PIN

PN: D02-0828-04002

Specification: CH=0.20mm DIP



### USB Female 4PIN

PN: D02-0857-04004

Specification: CH=0.89mm DIP

# Walta Product Portfolio

## USB Connector- 2.0



### USB Female 4PIN

PN: D02-0863-04001 (CH=-0.44mm)

PN: D02-0863-04002 (CH=-0.80mm)

Specification: DIP



### USB Female 4PIN

PN: D02-0869-04001

Specification: CH=1.40mm



### USB Female 4PIN

PN: D02-0783-04006

Specification: CH=3.0mm DIP



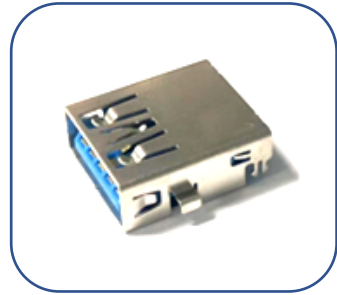
### USB Female 4PIN

PN: D02-C097-04001

Specification: -

# Walta Product Portfolio

## USB Connector- 3.0



### USB Female 9PIN

PN: D02-0807-09001 (blue)

PN: D02-0807-09002 (black)

Specification: Reverse. CH=0.40mm DIP



### USB Female 9PIN

PN: D02-0850-09001

Specification: CH=0.40mm DIP



### USB Female 9PIN

PN: D02-0807-09004

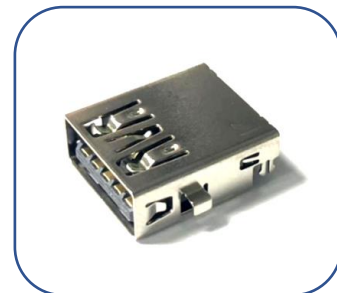
Specification: Reverse. CH=0.00mm DIP



### USB Female 9PIN

PN: D02-0850-09002

Specification: CH=1.69mm DIP



### USB Female 9PIN

PN: D02-0807-09005 ( black )

PN: D02-0807-09006 (blue)

Specification: Reverse. CH=0.40mm DIP



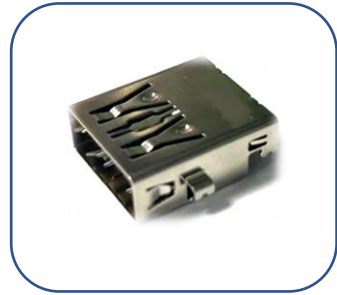
### USB Female 9PIN

PN: D02-0850-09003

Specification: CH=1.90mm DIP

# Walta Product Portfolio

## USB Connector- 3.0



### USB Female 9PIN

PN: D02-0850-09004

Specification: CH=0.10mm DIP



### USB Female 9PIN

PN: D02-0860-09001

Specification: Reverse. CH=-0.36mm DIP



### USB Female 9PIN

PN: D02-0861-09001

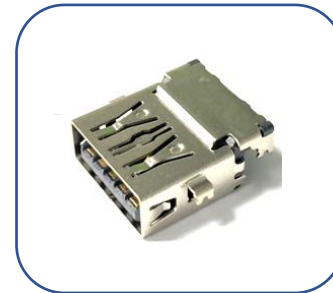
Specification: CH=-0.45mm DIP



### USB Female 9PIN

PN: D02-0862-09001

Specification: Reverse. CH=-0.44mm DIP



### USB Female 9PIN

PN: D02-0870-09001

Specification: Reverse. CH=-1.20mm DIP



# Walta Product Portfolio

## USB Connector- Type C



### **Type C Female 16PIN**

PN: D13-0824-16007

Specification: DIP+SMT



### **Type C Female 16PIN**

PN: D12-0872-16001

Specification: CH=0.30mm DIP+SMT

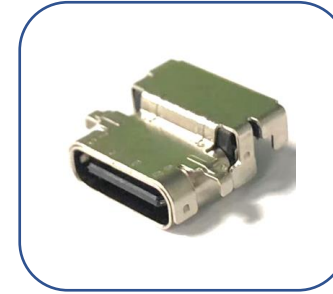


### **Type C Female 24PIN**

PN: D13-0867-24001 ( H=12mm)

PN: D13-0867-24002 ( H=7.7mm)

Specification: DIP+SMT



### **Type C Female 24PIN**

PN: D13-0868-24001

Specification: CH=-1.40mm DIP+SMT



### **Type C Female 24PIN**

PN: D13-0871-24001

Specification: CH=1.1mm DIP+SMT



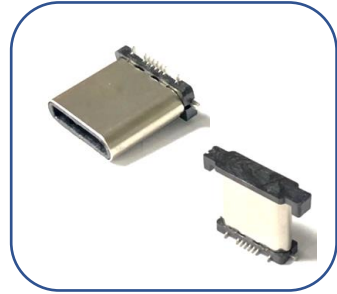
### **Type C Female 24PIN**

PN: D13-0824-24018

Specification: DIP+SMT

# Walta Product Portfolio

## USB Connector- Type C



### **Type C Male 16PIN**

PN: A13-0836-16001

Specification: SMT



### **Type C Male 22PIN**

PN: U03-C085-02201

Specification: SMT

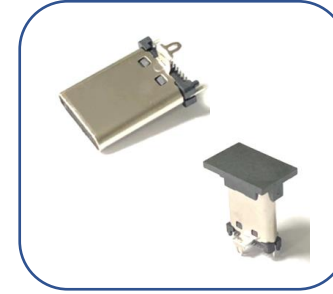


### **Type C Male 22PIN**

PN: A13-0848-22001 ( Au : G/F )

PN: A13-0848-22002 ( Au : 30u'' )

Specification: SMT +DIP



### **Type C Male 24PIN**

PN: U03-C071-02401

Specification: SMT +DIP



### **Type C Male**

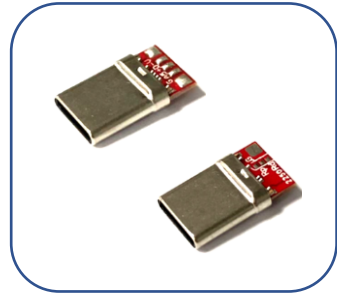
PN: M30-0866-00001(24PIN)

PN: M30-0866-00002(12PIN)

Specification: -

# Walta Product Portfolio

## USB Connector- Type C: plug with PCB



### **Type C Male 12PIN**

PN: M30-0866-01001

Specification : C TO C



### **Type C Male 12PIN**

PN: M30-0866-01002

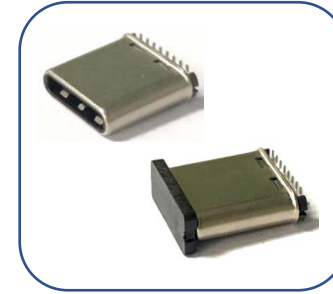
Specification: A TO C, Rp 56k Ohms



### **Type C Male 12PIN**

PN: M30-0866-01003

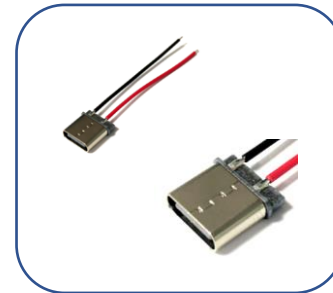
Specification: Micro B TO C, Rd 5.1K Ohms



### **Type C Male 16PIN**

PN: A13-0873-16001

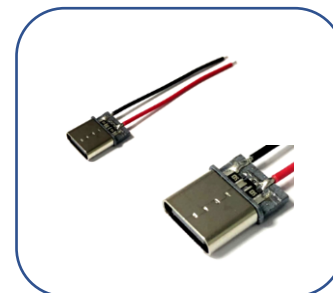
Specification: SMT



### **Type C male plus cable**

PN: M30-C097-00001

Specification: -



### **Type C male plus cable**

PN: M30-C097-00002

Specification: -

## Walta Product Portfolio

### USB Connector- Type C: plug with PCB



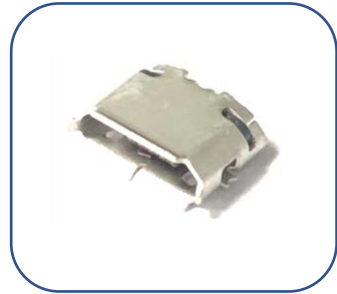
#### **Type C Male 24PIN**

PN: M30-0838-01005

Specification: C TO C C1=10nF

# Walta Product Portfolio

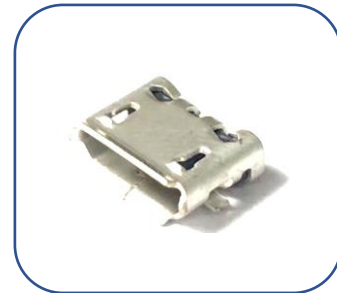
## Micro USB



**Micro Female 5PIN**

PN: D03-0718-05001

Specification: SMT



**Micro Female 5PIN**

PN: D03-0718-05002

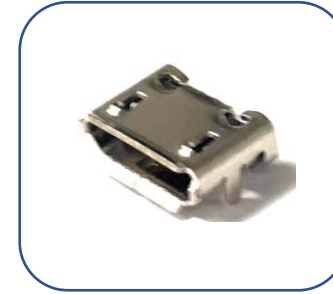
Specification: SMT



**Micro Female 5PIN**

PN: D03-0718-05003 (Association Version )

Specification: SMT+DIP



**Micro Female 5PIN**

PN: D03-0718-05035

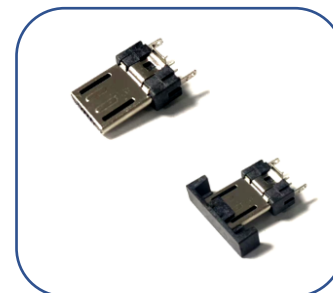
Specification: SMT+DIP



**Micro Female 5PIN**

PN: D03-0796-05005

Specification: SMT+DIP



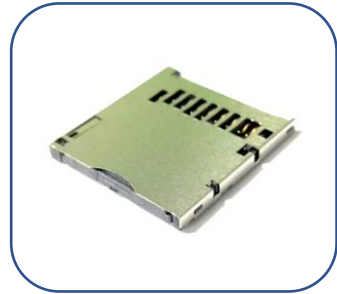
**Micro Male 5PIN**

PN: M30-0717-00045

Specification: DIP

# Walta Product Portfolio

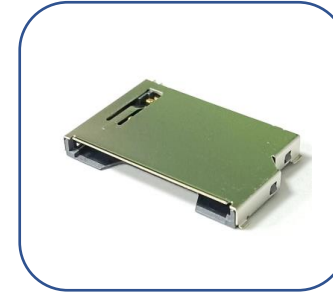
## SD/TF Card



### SD push-push

PN: F03-0655-00008

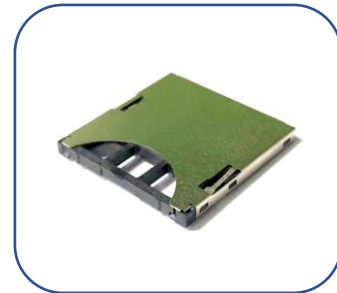
Specification: Reverse. H=2.85mm



### SD Non push

PN: S01-0115-00001

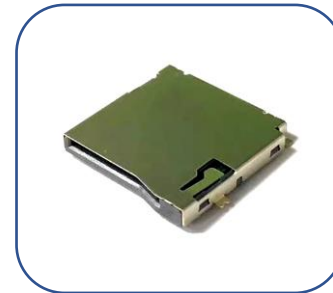
Specification: H=2.80mm



### SD push-push

PN: F03-0647-00001

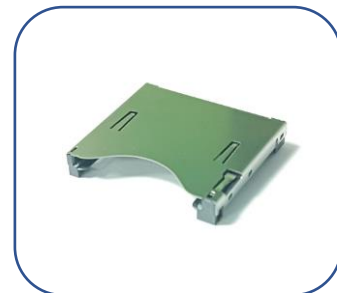
Specification: -



### Micro SD push-push

PN: S01-C024-00002

Specification: -



### SD push-push

PN: F03-0116-00001

Specification: H=4.55mm



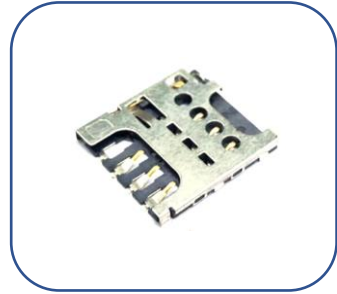
### Micro SD Non push

PN: F03-0105-00001

Specification: -

# Walta Product Portfolio

## Sim Card



### Micro Sim

PN: E03-0810-06001 (6PIN)

PN: E03-0810-08001 (8PIN)

Specification: H=1.40mm



### Nano SIM

PN: E03-0855-06001

Specification: Hinge



### Nano Sim Push-Pull

PN: F03-0121-00001

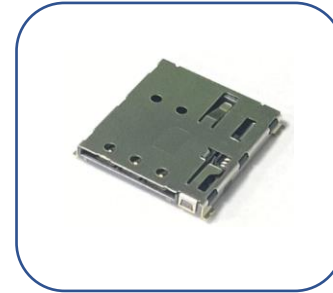
Specification: H=1.3mm



### Micro sim push-push

PN: S05-C088-06001

Specification: H=1.35mm



### Nano sim push- push

PN: S05-C088-06002

Specification: H=1.44mm



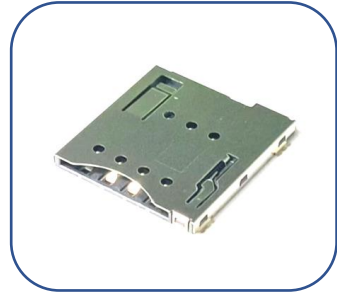
### Sim Hinge Type

PN: F03-0115-00001

Specification: H=1.8mm

# Walta Product Portfolio

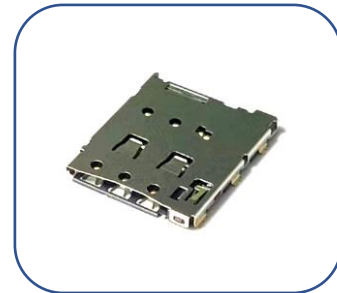
## Sim Card



### **Micro sim push-push**

PN: F03-0119-00001

Specification: H=1.5mm



### **Nano sim push-push**

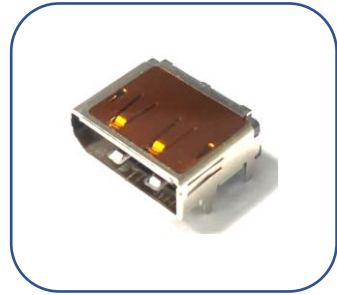
PN: F03-0123-00001

Specification: H=1.24mm



# Walta Product Portfolio

## Display Port



### **DP**

PN: D01-C097-02001

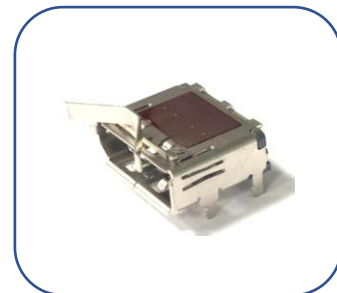
Specification: DIP + SMT



### **DP Vertical**

PN: D02-C124-02001

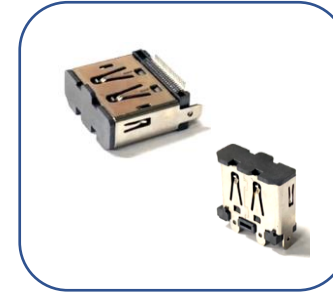
Specification: DIP + SMT Vertical



### **DP + Fringe**

PN: D06-C124-0200X

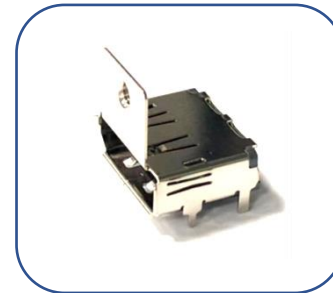
Specification: DIP + SMT



### **DP Vertical**

PN: D04-C124-02001

Specification: DIP + SMT



### **DP + Lock**

PN: D05-C124-02001

Specification: DIP + SMT

# Walta Product Portfolio

## Cables



### USB CM to CM

PN: U07-W101-00001

Specification: L:1000mm.  
USB 3.2(32#1P+D+AL/MY)\*4P+32#1P+32  
4C+22#2C+AB(144B/TC). OD:4.5mm  
PVC Black jacket



### USB 2.0 AM to CM

PN: U03-W101-02401

Specification: L:1000mm.  
30AWG\*1P+26AWG\*2C+AS, PVC black Jacket,  
OD 3.2+/-0.05mm



### DP/M to DP/M

PN: D01-W129-00001

Specification: L: 1000mm. OD: 5.5mm  
Voltage: 300V DC/0.1s  
Jacket: PVC  
Function: 4K 60Hz



### USB 2.0 AM to CM

PN: U06-W101-00001

Specification: L:1500mm.  
28AWG\*1P+22AWG\*2C+AL+D+B,  
OD 4.5mm, PVC black jacket



### DP 2.1/M to DP 2.1/M

PN: W01-C126-00001

Specification: 1/0.254BC\*1P+AL-  
foil+Adhesive-PET)\*  
5P+1/0.254BC\*2C+ADB PVC black  
jacket OD: 6.3mm



### Wire Charger

PN: U09-W101-00001

Specification: L: 82mm, Voltage: 300V DC/0.1s  
WIRE 28AWG Red, Black, Orange, Yellow, Blue, Green  
HSG, SH1.0-6P both side with lock  
TER, SH1.0 Terminal Sn plating  
TUBE, Gray conductive fabric, Anti-EMI

# Walta Product Portfolio

## Others we offer



**RGB Female 14PIN**

PN: D12-0558-14001

Specification: DIP



**RGB Male 14PIN**

PN: M30-0558-00051

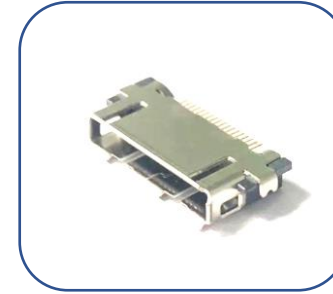
Specification: Solder Type



**Male 18PIN**

PN: A13-0619-18004

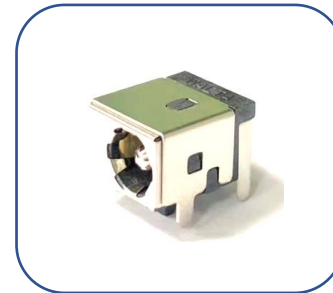
Specification: SMT+DIP



**Female 18PIN**

PN: D13-0826-18001

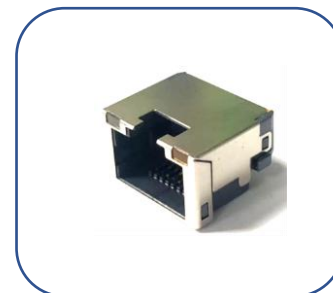
Specification: SMT+DIP



**DC Jack**

PN: D02-0732-03001

Specification: DIP



**RJ45**

PN: G02-0808-08001

Specification: H=5.90MM

# Walta Product Portfolio

## Others we offer



### **SHELL**

PN: M22-0853-20001

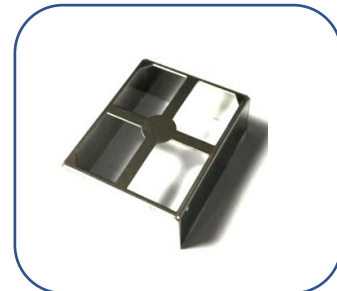
Specification: H=6.80mm



### **SHELL**

PN: M22-0853-20003

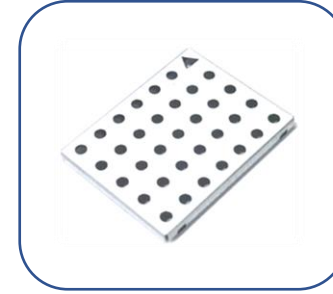
Specification: H=8.20mm



### **SHELL**

PN: M22-0853-20004

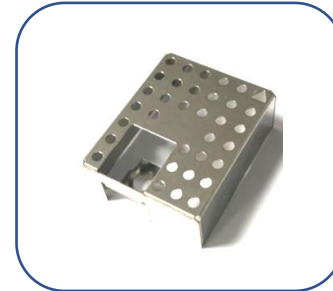
Specification: H=9.20mm



### **SHELL**

PN: M22-0853-20005

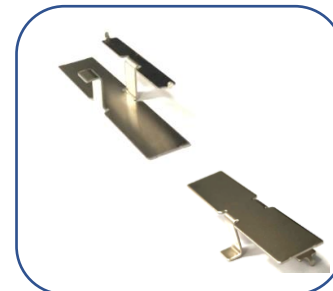
Specification: H=2.00mm



### **SHELL**

PN: M22-0853-20006

Specification: H=9.20mm



### **SHELL**

PN: M22-C097-50001

Specification: -

# Walta Product Portfolio

## Others we offer



### **SATA Female 22PIN**

PN: A42-0841-22001

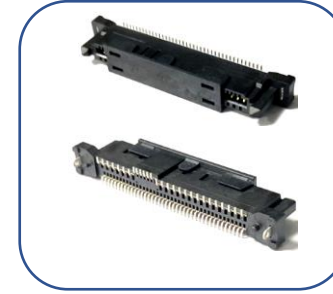
Specification: ( DIP ) CH=0.60mm



### **SATA Female 22PIN**

PN: A43-0841-22001

Specification: ( SMT+DIP ) CH=0.60mm



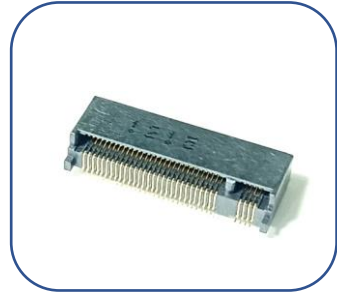
### **SATA Female 22PIN**

PN: A42-C097-48001

Specification: ( SMT+DIP )

# Walta Product Portfolio

## Others we offer



### **M2**

PN: M30-C088-00001

Specification: H=4mm



### **Mini PCI**

PN: M30-C088-00002

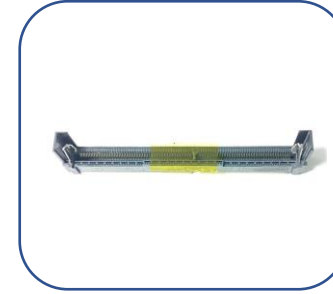
Specification: H=4mm



### **DDR4 R/A**

PN: M30-C088-00003

Specification: H=5.2mm



### **DDR4**

PN: M30-C088-00005

Specification: Erect position



### **DDR45**

PN: M30-C088-00007

Specification: Erect position



### **DDR5 R/A**

PN: M30-C088-00008

Specification: H=5.2mm

# Walta Product Portfolio

## Others we offer



### **DDR4**

PN: M30-C088-00004

Specification: R/A H=9.2mm



### **DDR4**

PN: M30-C088-00006

Specification: Vertical 260 Pin

# Walta Electronic

**We Activate Life To Anyone**

## ➔ **Be Young**

We will be mentally young in terms of doing our jobs, serving our customers and contributing to the community.

## ➔ **Be Competitive**

In this dynamic industry, we must be competitive in order to be successful. We will be competitive. We will serve customers with competitive products. We will continuously invest in design, manufacturing, engineering, ISO quality system and education to sustain the company's being competitive.

## ➔ **Be Profitable**

We will be a profitable corporation so that we can bring value to our customers and suppliers, provide our employees with dignified living necessities, provide our shareholders with favorable returns and support the company's steady growth and expansion.





# CONNECTOR

**We Activate Life To Anyone**

 For more information please visit: <http://www.walta.com.tw>

**WALTA**