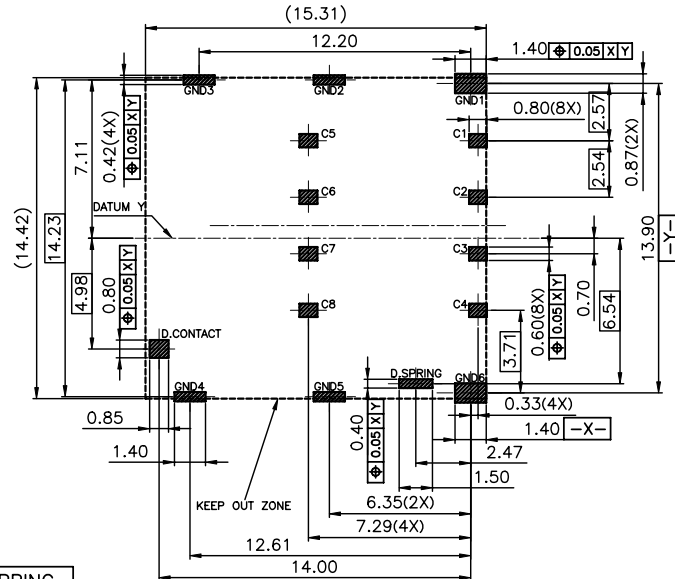
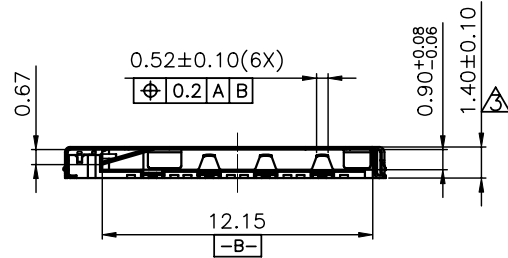
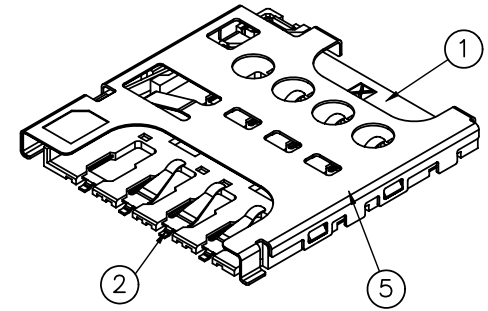
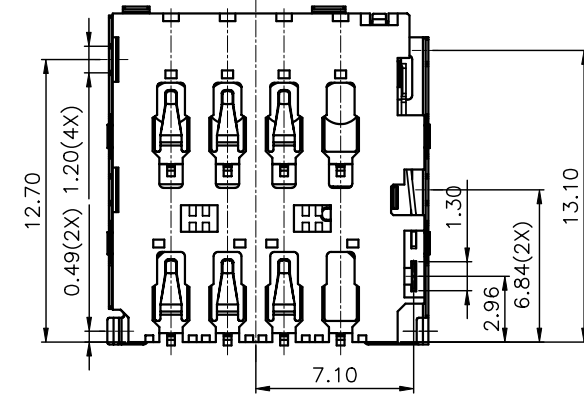
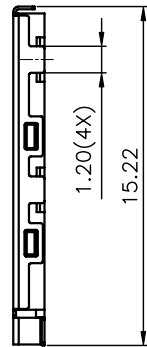
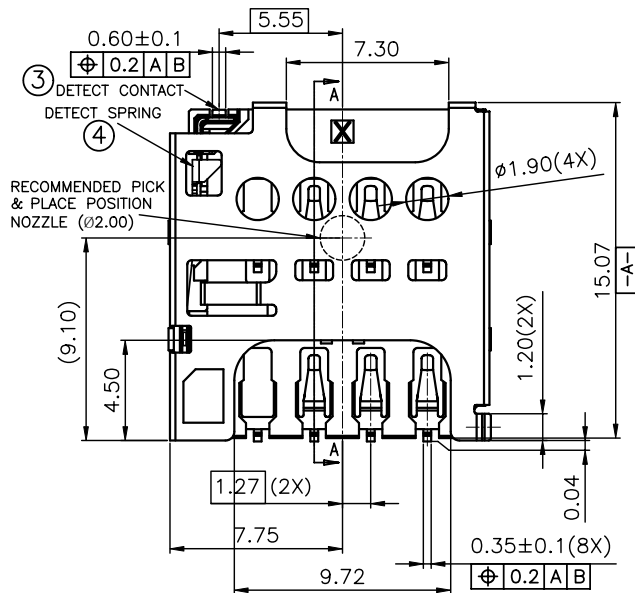
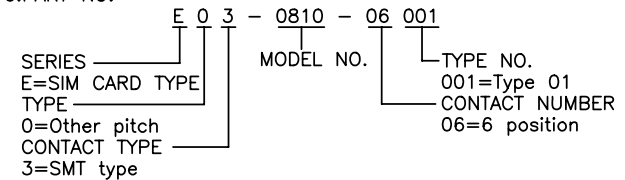


ITEM 項目	PARTS NAME 零件名稱	Q'TY 數量	MATERIAL 材質	FINISH/REMARK 處理/備註
1	HOUSING	1	SYNTHETIC RESIN	UL-94V-0 (Black)
2	CONTACT	6	COPPER ALLOY	Contact: Au 15u", solder: gold flash, Ni: 50u"
3	DETECT CONTACT	1	COPPER ALLOY	Contact: Au 5u", solder: Au: 1u", Ni: 50u"
4	DETECT SPRING	1	COPPER ALLOY	Contact: Au 5u", solder: Au: 1u", Ni: 50u"
5	SHELL	1	STAINLESS	Tin: 50u", Ni: 50u"



SPECIFICATION

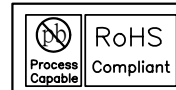
- MATERIAL
See drawing
- STANDARD DATA
Rating current: 0.5A
Voltage rating: 10V DC Max.
- ELECTRICAL
Insulator resistance: 1000M ohms Min. @ 100 VDC
Withstanding voltage: 500 VAC / minute
Contact resistance: 100 m ohms Max.
- MECHANICAL
Mating force: 10N(1.02kgf) Max.
Unmating force: 0.5N(0.05kgf) Min.
Durability: 500 cycles Min.
- OVERALL COPLANARITY(SOLDERTAIL AND SOLDERTAB): 0.08MM MAX
- PART NO.



CARD INSERTION STATE	DETECT SWITCH CIRCUIT STATE	SCHEMATIC
CARD MATED	OPENED	(D.S) — (D.C)
CARD UNMATED	CLOSED	(D.S) — (D.C)

D.S	DETECT SPRING
D.C	DETECT CONTACT

RECOMMENDED P.C.B LAYOUT
ALL TOLERANCE ±0.05mm



WALTA 華大電子股份有限公司
WALTA ELECTRONIC CO.,LTD.
TEL: 886-2-26577778; FAX: 886-2-26575659

REV. 版本	ECN NO. 設變號碼	MARK 記號	REVISIONS 設變內容	SIGN 修改	DATE 日期	UNLESS OTHERWISE SPECIFIED TOLERANCE 尺寸公差	CHECKED 審核	DESIGNED 設計	UNIT 單位	TITLE 產品名稱	PART NO. 產品料號	REV. 版本
C	E1703-003	X 1	修改圖面公差	TANG	2017/3/3	X. ±0.50		Lonlon	MM	MICRO SIM CONNECTOR	E03-0810-06001	
B	E1308-006	X 1	偵測PIN端子電鍍規格變更	Lonlon	2013/8/20	.X ±0.30		Lonlon	1/1	1.40MM HEIGHT, PUSH PULL WITH DETECT PIN		
A	N2013-002	X 0	新開	Lonlon	2013/3/20	.XX ±0.20	APPROVED 承認	Lonlon	A4	CUT-0810-001 (1/2)		
						ANG. ±5°0'						